

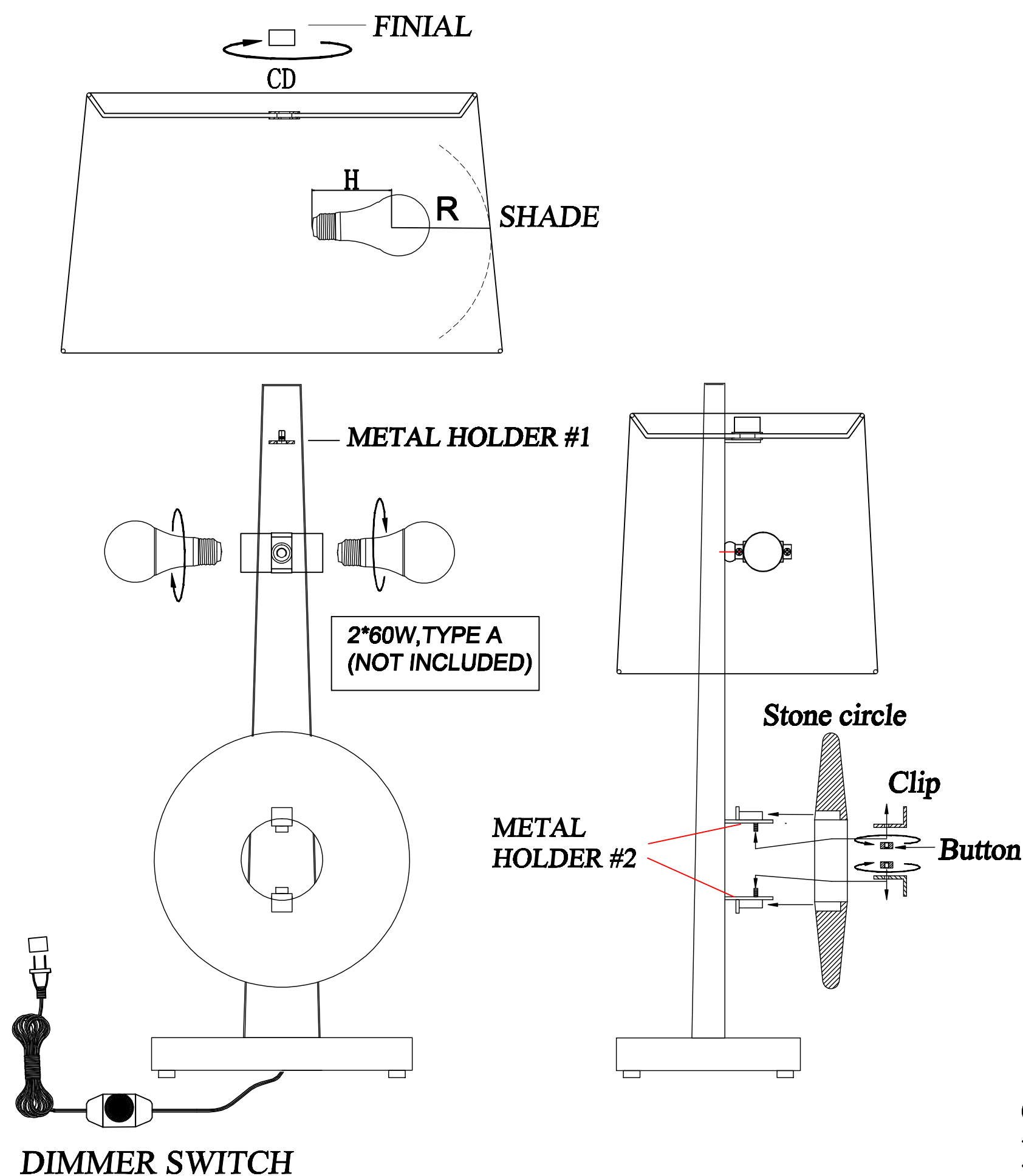
REVELATION

by UTTERMOST

ASSEMBLY INSTRUCTIONS

Assembly Instruction

STYLE NO.: R30073-1



1. Take the parts carefully out of the carton, and place them on a flat surface, make sure that the parts will not be damaged.

2. Place the stone circle onto the metal holder #2, then use the "L" shape metal clip and button to screw tight.

3. Place the shade onto the metal holder #1, then screw the finial clockwise onto the until the shade is secured.

CAUTION: IN ACCORDANCE WITH THE UL REGULATION, THE SHADE SHOULD BE OPEN TOP & OPEN BOTTOM AND "CD" IS BIGGER THAN OR EQUALS TO $3\frac{1}{2}$ ", "R" IS NOT SMALLER THAN $2\frac{1}{2}$ " OR MAY CAUSE FIRE. "H" IS $3\frac{1}{4}$ ".

To clean, wipe with soft dry cloth.

NOTE: THE DRAWING OF THE LAMP BODY IS FOR REFERENCE ONLY.